

**MODENA CENTRO PROVE s.r.l.**

Sede legale e Laboratori: 41123 Modena (Italy) - Via Sallustio, 78
Tel. 059 822417 r.a. - Fax 059380281 - e-mail : info@modenacentroprove.it - www.modenacentroprove.com
C.C.I.A.A. Modena n. 228587 - Tribunale di Modena n° 2231 - C.F. e P. IVA n. 01592020364

MECCANICA

ECOLOGIA

CERAMICA

ALIMENTARE

Modena, 19/08/19

To **GRUPPO ROMANI S.P.A.**
VIA A.VOLTA 9
23/25
42013 CASALGRANDE RE

Attn. **sig. Marastoni**

MATERIAL and/or SAMPLE to be tested	Denomination of the Sample	Client Reference – Your delivery	date
PORCELAIN TILES	1066581 FOSSIL PIOMBO RET 60X60	NS RITIRO	15/7/19

Here attached, you will receive the Test Report of Serial No. **20195798**/n, which shows the results of tests required.

MODENA CENTRO PROVE

MODENA CENTRO PROVE

Director
Sant'Unione dr. Giuseppe



MODENA CENTRO PROVE s.r.l.
Sede legale e Laboratori: 41123 Modena (Italy) - Via Sallustio, 78
Tel. 059 822417 r.a. - Fax 059380281 - e-mail : info@modenacentroprove.it -
www.modenacentroprove.com
C.C.I.A.A. Modena n. 228587 - Tribunale di Modena n° 2231 C.F. e P. IVA n. 01592020364



LAB N°1018L

Membro degli Accordi di Mutuo Riconoscimento EA, IAF e ILAC

Signatory of EA, IAF and ILAC Mutual Recognition Agreements

TEST REPORT: 20195798/1

Modena, 19/08/19

CUSTOMER	GRUPPO ROMANI S.P.A. - - VIA A.VOLTA 9 23/25 - 42013 - CASALGRANDE - RE
MATERIAL and/o SAMPLE to be tested	PORCELAIN TILES;
Denomination	1066581 FOSSIL PIOMBO RET 60X60;
Date of sample reception	15/07/2019;
Date of sample acceptance	15/07/2019;
Kind of test executed	Determination of the Resistance to Stains
Referring standards	UNI EN ISO 10545-14:2015
Shifting from standards	No one
Equipment	Luxmeter cod. MCP C69 - Forced ventilation stove cod. MCP C43
Subcontracted phases	No one
Sampling made by	Customer

*The test results showing in this Report are only referred to the sample taken by our staff or supplied by the Customer. He commits himself to reproduce integrally this document. Partial reproduction is forbidden.
The times of retain of the samples was indicated in the offer related to the test report.*

Examiner

p.i. Bortolai Alberto

MODENA CENTRO PROVE

P.I. De Pasquale Roberto
Ceramic Dept. Responsible

MODENA CENTRO PROVE

Sant'Unione dr. Giuseppe
Director



DETERMINATION OF THE RESISTANCE TO STAINS

Beginning date : 01/08/2019

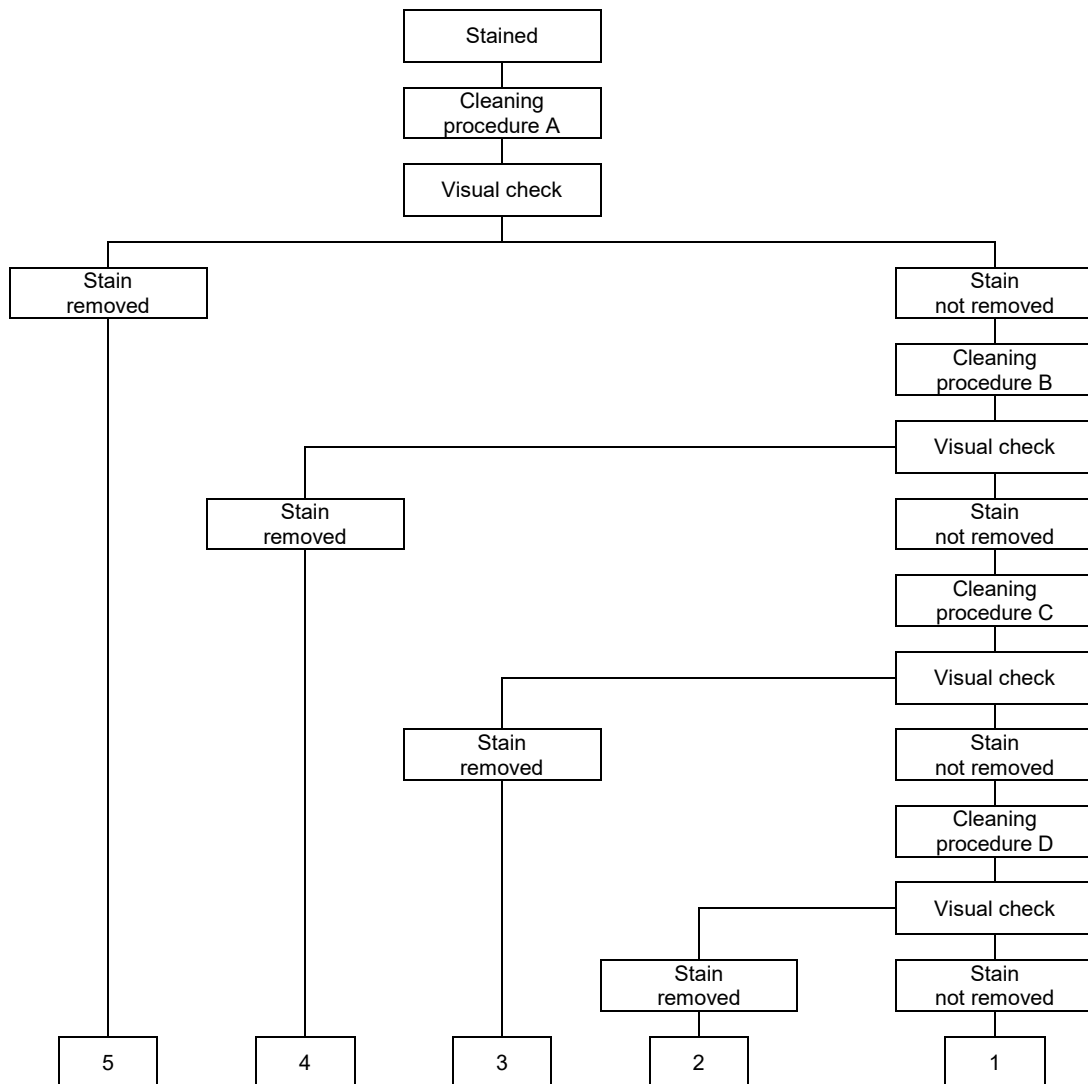
Analysis ending date : 02/08/2019

SAMPLE : Ceramic tiles, marked «**1066581 FOSSIL PIOMBO RET 60X60** »

The test was performed by subjecting the surface of the tiles to the action of test solutions and then inspecting for visual changes.

CLASSIFICATION

Classification of the Stains by Cleaning Test



Examiner

p.i. Bortolai Alberto

MODENA CENTRO PROVE

Ceramic Dept. Responsible
P.I. De Pasquale Roberto

MODENA CENTRO PROVE

Director
Sant'Unione dr. Giuseppe



RESULTS

Classification:

Sample n°	Standing time	Staining agents	Cleaning agents					Class	
			Procedure A	Procedure B	Procedure C	Procedure D			
			Hot water	Weak cleaning agent	Strong cleaning agent	Solvents			
						HCl 3%	KOH 200 g/l		ACETONE
1	24 hours	Green staining agent in light oil	Rimosso						5
	24 hours	Iodine 13 g/l solution in alcohol	Rimosso						5
	24 hours	Olive oil	Rimosso						5
2	24 hours	Green staining agent in light oil	Rimosso						5
	24 hours	Iodine 13 g/l solution in alcohol	Rimosso						5
	24 hours	Olive oil	Rimosso						5
3	24 hours	Green staining agent in light oil	Rimosso						5
	24 hours	Iodine 13 g/l solution in alcohol	Rimosso						5
	24 hours	Olive oil	Rimosso						5
4	24 hours	Green staining agent in light oil	Rimosso						5
	24 hours	Iodine 13 g/l solution in alcohol	Rimosso						5
	24 hours	Olive oil	Rimosso						5
5	24 hours	Green staining agent in light oil	Rimosso						5
	24 hours	Iodine 13 g/l solution in alcohol	Rimosso						5
	24 hours	Olive oil	Rimosso						5

REQUIREMENTS UNI EN 14411:2016

GROUP: Bla
 UNI EN 14411:2012 Annex: G

		REQUIREMENT
RESISTANCE TO STAINING	Glazed tiles	Minimum Class 3
	Unglazed tiles	Declared value

 p.i. Bortolai Alberto	 MODENA CENTRO PROVE Ceramic Dept. Responsible P.I. De Pasquale Roberto	 MODENA CENTRO PROVE Director Sant'Unione dr. Giuseppe
---------------------------	--	---